

BUILDING WHAT MATTERS!

eliminating racism
empowering women

ywca

Kalamazoo

*Michigan's only comprehensive
early childhood learning center
that includes*

*1st, 2nd and 3rd shift care
and 24-hour drop-in services*



**1st, 2nd and 3rd
shift care**

Encouraging economic
stability for
working families

**Comprehensive, high
quality early learning**

Ensuring academic
readiness in the
formative years

**24-hour drop-in
child care**

Guaranteeing a safe
environment when the
unexpected occurs

YWCA EDISON CHILDREN'S CENTER

A NEW AND INNOVATIVE APPROACH TO EARLY LEARNING AND CHILDCARE

OPENING NEW DOORS! IT TAKES COMMITMENT



**Our mission is to serve
the most vulnerable families in our communities.**

\$5.4 M

OUR GOAL

- | | |
|----------------------------------|--------|
| • Capital and Purchase | \$2.2M |
| • Program Development and Launch | \$1.2M |
| • Endowment Fund | \$2.0M |
| • Total Goal | \$5.4M |

TOTAL RAISED TO DATE

\$1,203,221.00 and counting!

OUR BUDGET

Capital and Purchase - \$2,200,000

Construction	\$1,700,000
Kitchen Equipment	100,000
Classroom Fixtures	200,000
Playground Equipment and Installation	50,000
Security Systems	100,000
Minibus	50,000

Program Development and Launch - \$1,200,000

Wages, Salaries and Benefits	\$1,101,000
Program Supplies	45,000
Insurance, Utilities, and Contracted Services	29,000
Staff Development	25,000

Endowment - \$2,000,000

To ensure sustainability, in 2021 we will establish our YWCA Children's Centers Endowment Fund which will guarantee support for resources to cover tuition shortfalls, equitable pay, and emergency provisions to better support vulnerable families.

Your Financial Support Will Ensure. . .

Capital and Purchase

Goal
\$2,200,000

Total Raised
\$962,221

Remaining
\$1,237,779

GIFTS OF \$35,000—\$50,000

CHANGE MAKER

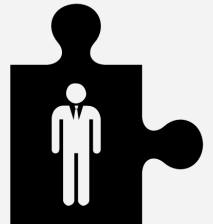
- *Nature-based Playground Equipment*
- *Classroom Furnishings*
- *Overnight Bedding and Equipment*



GIFTS OF \$20,000—\$34,999

ADVOCATE

- *Equipment for Children with Special Needs*
- *Equipment for Children Experiencing Trauma*
- *Common Room Equipment*



GIFTS OF \$10,000—\$19,999

SUPPORTER

- *One Year Supply of Art Equipment*
- *Staff Equipment*
- *Classroom Storage Equipment*



GIFTS OF \$500—\$9,999

FRIEND

- *Seating and Calming Equipment*
- *Book Storage*
- *Car Seats*



Opportunities to provide a safe learning environment for children

We Need Your Financial Support!

Program Development and Launch

Goal	Total Raised	Remaining
\$1,200,000	\$241,000	\$959,000

GIFTS OF \$35,000—\$50,000

CHANGE MAKER

- *Annual Supplies for a Classroom*
- *Equitable Salary for a Teacher*
- *Equitable Salary for a Center Director*
- *Family Advocate Scholarship*
- *Scholarships for Edison Families*

GIFTS OF \$20,000—\$34,999

ADVOCATE

- *Infant Room Supplies*
- *Equitable Salary for a Bus Driver*
- *Professional Development for 20 Staff Members*
- *Scholarship for a Homeless Family*
- *A Drop-in Childcare Slot*
- *Parent Leadership Materials*

GIFTS OF \$10,000—\$19,999

SUPPORTER

- *Classroom for 2-year old children*
- *Classroom for 3-year old children*
- *Emergency Food Baskets*
- *One Month of Tuition Assistance*

GIFTS OF \$500—\$9,999

FRIEND

- *Educational Materials*
- *Teacher Supplies*
- *Two Weeks of Tuition Assistance*

Providing childcare for working families and employment in the neighborhood

A LASTING LEGACY...

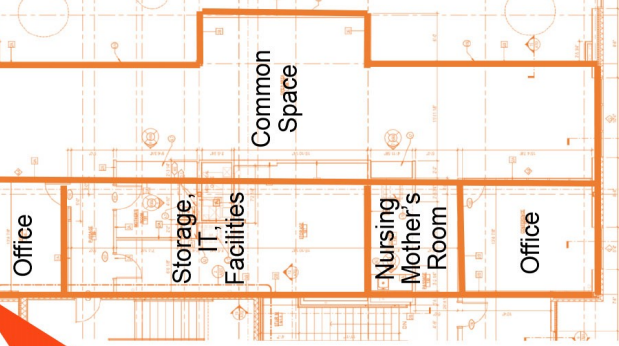
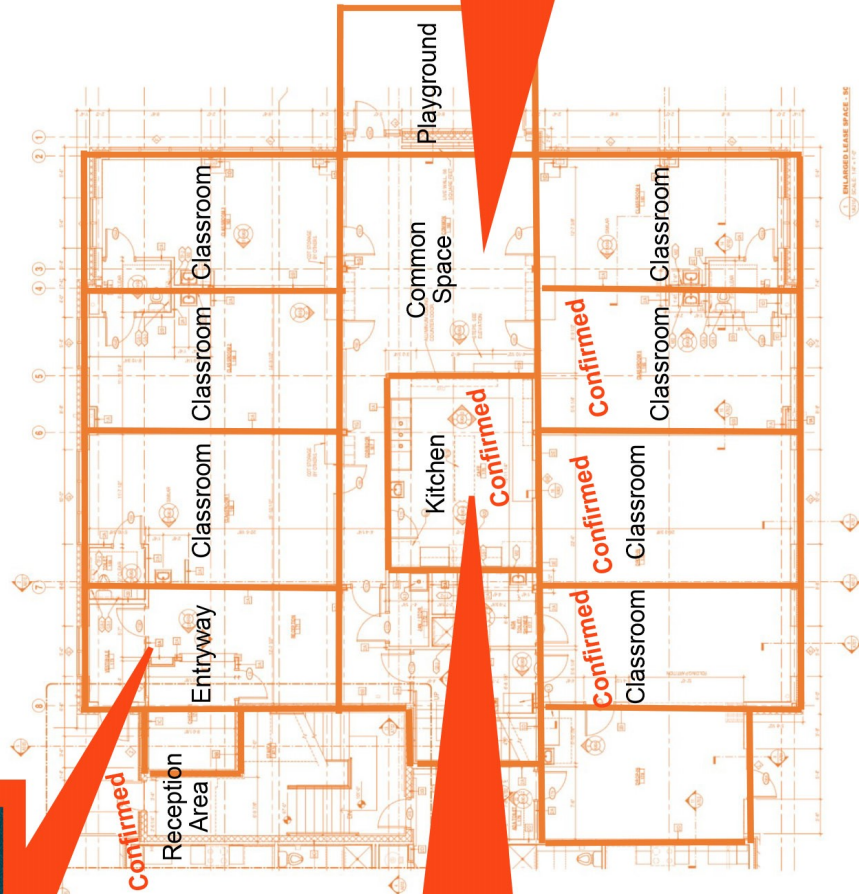
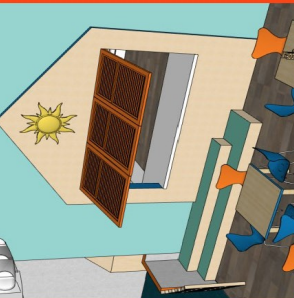
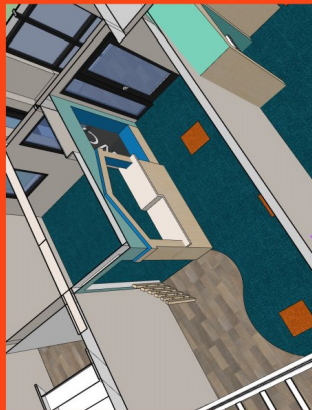
Honoring Someone Special



Naming Opportunities

The Mezzanine	\$1,000,000
Entryway	\$500,000
Reception and Resource Area	NAMED
Classrooms— <i>Seven Classrooms/THREE ARE NAMED</i>	\$150,000
MiniBus	\$55,000
Nature-Based Playground	\$55,000
Kitchen	NAMED
Common Space & Offices	\$40,000
Playground Stones	\$2,500

The Mezzanine



MEETING OUR COMMUNITY'S NEEDS...

YWCA Kalamazoo provides high quality childcare!

We have been committed to improving lives of children by providing high-quality childcare.

Each year we serve 80-100 children!

Eighty percent live below the poverty line and require additional financial, emotional, and educational supports.

More than 250 children are in need.

YWCA Kalamazoo currently has a wait list of approximately 250 children who need high quality early learning childcare.

WE CREATE REAL CHANGE.



**YWCA Edison
Children's Center**
1155 Portage Street
Kalamazoo, MI 49001
Opening scheduled for 2021

Supporting the education of children from families living in poverty plays a critical role in making a lasting, positive impact on the individual family.

90% of children living in the Edison, Northside and Eastside neighborhoods are **NOT** enrolled in high-quality, early learning programs.

Program Partners

YWCA Kalamazoo in partnership with Hollander Development



Funding Partners to Date

Burdick-Thorne Foundation ~ Colef Foundation ~ Dorothy Dalton Foundation
 H.P and Genevieve Connable Foundation ~ Irving S. Gilmore Foundation
 Kalamazoo Community Foundation ~ Local Initiatives Support Coalition (LISC)
 Okun Foundation ~ PNC Bank ~ Sisters of St. Joseph
 Suzanne U.D. Parish Foundation ~ Private Contributions

CABINET COMMITTEES

Programming Task Force

Therese Armstead—KCreedy 4's	Michele Obermeier—Community Advocate
Ann Brown—Owner, Learning Village	Sister Rita Ann Teichman—Sisters of St. Joseph
Jacque Eatmon—Former President, Great Start Collaborative	Katie Stryker-Clark—Community Advocate
Elizabeth Garcia—KydNet	Maren Uggen—Community Advocate
April Goodwin—Executive Director, Childcare Resources	Melicent Van Peenan—Retired Educator, YWCA Advocate
Kathleen McNinch—Kzoo Drop-In Childcare Center	Adrian Vazquez—Executive Director, El Concilio

Fundraising Task Force

Pam Enslen—Partner Warner, Norcross and Judd Law Firm Chairperson	Don Parfet—Managing Director Apjohn Group, LLC Vice Chairperson
Zac Bauer—Program Officer, LISC	Sarah Sandell—Past Board Chairperson, YWCA Kalamazoo
Meloney Byrd—Training Specialist, Pfizer	Marilyn Schlack—Former President, Kalamazoo Valley Community College
Mary Harper—Former YWCA Kalamazoo Board Member	Katie Stryker Clark—Community Advocate
JJ Henn—Community Supporter	Maren Uggen—Community Advocate
Deborah Hewitt—Talent Acquisition Site Lead, Pfizer, Inc.	Wendy Van Peenan—YWCA Kalamazoo Board Treasurer and Controller, Apjohn Group, LLC
James Liggins—Senior Counsel, Warner, Norcross and Judd Law Firm	Eugenia Velazquez—Franchise Owner McDonald's Corporation
Ann Parfet—Community Advocate	
Kimberly Peterson—Vice President Investment Officer Wells Fargo Advisors	

YWCA Kalamazoo Staff:

Dr. Grace Lubwama—Chief Executive Director
Lisa Rodriguez—Vice President of Development
Nichole Blum—Early Learning Program Manager
Emily Deering-Caruso—Development Manager

**eliminating racism
empowering women**

ywca

Kalamazoo

Board of Directors

Heather Haigh, Chairperson

Demarra West, Vice Chairperson

Wendy Van Peenan, Treasurer

Lara Latham, Secretary

Sarah Sandell, Past Chairperson

Artrella Cohn

Jen Holder

Regena Nelson

Kimberly Brinkman

Lupe Velazquez

Cyekeia Lee

Sara Nicholson

Kathy Purnell

Cathy Wortham

353 East Michigan Avenue

Kalamazoo, MI 49007

Phone: 269,.345.5595

www.ywcakalamazoo.org

**YWCA
IS ON A
MISSION**

eliminating racism
empowering women
ywca
Kalamazoo